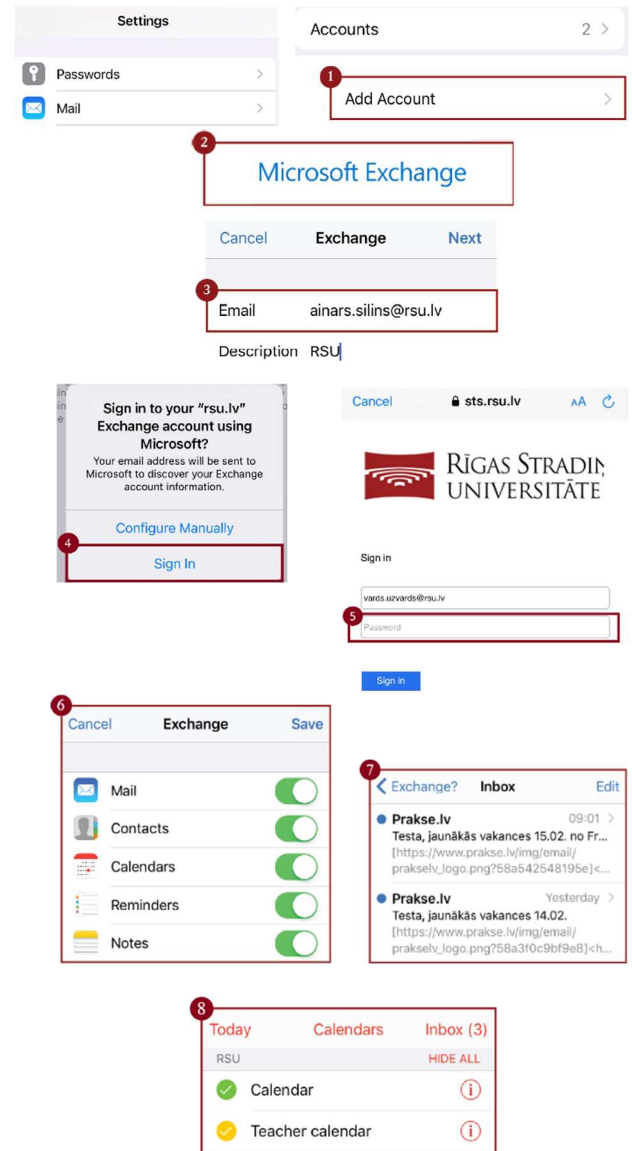


# Synchronizing email with *iOS devices*

1. Go to “Settings”, “Mail”, “Accounts” and click “Add account”
2. Click “Microsoft Exchange”
3. Enter your RSU e-mail and click “Next”  
**Example:**  
**User:** *name.surname@rsu.lv* (E.g., *ainars.silins@rsu.lv*)
4. Click “Sign In”
5. Enter your RSU e-mail password and click “Sign In”.
6. Do not change any settings, click “Next”!
7. After the synchronization, you will be able to see your student e-mail in your device’s default e-mail application
8. You will be able to see your timetable in your default calendar application. To make sure, you see all available calendars, in calendar, under “Calendars”, check all calendars to show them



If the user does not want to install *Exchange* app on one’s phone, but wants to access one’s *RSU e-mail* via a smartphone, the user can use the phone’s web browser and go to the site: **webmail.rsu.lv** and access one’s e-mail, by entering the **RSU user name** (e.g., *rsu\ainsil*) and **password**